

# TCM

Tri Custom Manufacturing

- Balusters / Spindles
- Post Mount Towers
- Porch & Newel Posts
- Gate Hardware
- Caps / Post Skirts
- Faux Rock Pillars
- Railing Brackets
- Post Wraps



Quality Products for the Fence, Deck and Railing Industry™



# Pre-Formed Faux Rock Pillars

*"If you can't tell the difference, what difference does it make!"™*

## 12" Wide Pillars

- River Rock Pattern
- Colors: Rustic Calico, Brown & Gray
- Can be ordered with a mailbox

**Gray**



**Calico**



**Brown**



Pillar

12" x 12" x 59" high  
(Add 5" for cap)

Pillar Riser

12" x 12" x 17 3/8" high  
(Same color as cap)



## Advantages

- No Mason Required
- Same Day Installation
- Easy Installation / One Person
- No Sub-contractors
- Impact Resistant / Durable
- Can be Shipped by UPS!
- Formed with Heavy Wall MDPE
- Weather & Insect Proof
- UV Fade Resistant
- Maintenance Free
- Affordable / Cost Effective
- Versatile

## 21" Wide Stackable Pillars

- Ledge Stone Pattern
- Colors: Brown & Gray
- Stack as high as your internal structure will support

Pyramid Cap



Flat Cap



Main Pillar Section  
21" x 21" x 46" high

(Add 10 1/2" for pyramid cap and 4" for flat cap)



Stack Section  
21" x 21" x 15 1/2" high

## Compatible with

- Ornamental Fence
- Vinyl Fence
- Aluminum Fence
- Vinyl Railing
- Ranch Rail
- Wood Fence
- Privacy Fence
- Horse Fence
- Mail Box Post
- Lamp Post
- Sign Pillar
- Horse Jump



If ordering stack sections, please order at the same time as the main pillar sections to ensure color match.



Flower Box Planter Available





## Installation

Each Pillar can be buried for shorter applications. The Pillar is slid over a pre-installed 4 x 4 or other existing post and secured into place by putting additional concrete or gravel inside the Pillar. The simulated concrete cap is removable and is designed to accept different lighting applications. Contact us for complete installation instructions.

**Structural Post**

**Concrete**



UPS and the UPS brandmark are trademarks that are used with permission by the owner, United Parcel Service of America, Inc. All rights reserved.

**Sold by the piece - full box quantities not required.**

White

Tan  
(Almond)



**Flat Cap**

#VC-F4 (4")  
#VC-F5 (5")



**New England Cap**

#VC-NE4 (4")  
#VC-NE5 (5")



**2" x 3-1/2" External Rail Cap**

#VC-110



**Newport Cap**

Fits externally • Extends 1.250" over the profile • Total height 6.125".  
#VC-113 (4" white only)



**Ball Cap**

#VC-B4 (4")  
#VC-B5 (5")



**Gothic Cap**

#VC-120 (1-1/2")  
#VC-G4 (4")  
#VC-G5 (5")



**Beveled Picket Cap**

#VC-121 (1-1/2")



**SharpPicket Cap**

#VC-119 (1-1/2")



**Decorative Knuckle**

#VM-111 (4" only)



**New England Post Skirt**

#VC-SK4 (4")  
#VC-SK5 (5")  
#VC-SK6 (6")



**Two Piece Post Skirt**

#VC-SK2P4 (4")  
#VC-SK2P5 (5")



**Four Piece Post Skirt**

#VC-SK4PW  
4" to 6-1/2"

## Solar Lighting



**Galaxy Solar Post Cap**

Fits externally over 4" or 5" posts • Dual Ni-Cad rechargeable batteries • Four LED lights • Up to 12 hours of light • Includes adapter for use with 4" posts.  
#VLS-101

White, Tan & Black



**Galaxy Solar Wedge Accent Light**

3" x 2-1/2" x 7" • Ultrabright 3 LED lights • 3 rechargeable Nicad batteries • Attaches to most surfaces • Includes screws and 6" double sided tape  
#VLS-107  
White & Tan



**Railing Foot Block**

The adjustable Foot Block Kit is designed to support sagging rails. Two-piece unit comes pre-assembled & ready to mount. The internal ratchet feature allows the Foot Block to expand from 2.000" to 3.500" in 1/4" increments. #VM-108

**\*Covered brackets meet AC-174 Code**



**2" x 3-1/2" Covered Bracket Kit**  
Includes: (2) 2" x 3-1/2" Covers • (2) Nylon Back Plates • (16) #10 x 1-1/2" Pan Head • Phillips Drive • Self Drilling • Stainless Steel Screws.  
#VB-218 (3 Piece)



**T-Rail Covered Bracket Kit**  
Includes: (1) T-Rail Cover (1) 2" x 3-1/2" Cover • (2) Nylon Back Plates • (16) #10 x 1-1/2" Pan Head • Phillips Drive • Self Drilling • Stainless Steel Screws.  
#VB-219 (3 Piece)



**2" x 3-1/2" Stair Covered Bracket Kit**  
Includes: (1) Upper 2" x 3-1/2" Rail Cover • (1) Lower 2" x 3-1/2" Rail Cover • (2) Nylon Back Plates • (12) #10 x 1-1/2" Pan Head • Phillips Drive • Self Drilling • Stainless Steel Screws • Brackets can be used for 30 to 40 degree angles.  
#VB-212 (2 Piece)



**T-Rail Stair Covered Bracket Kit**  
Includes: (1) Upper T-Rail Cover • (1) Lower T-Rail Cover • (2) Nylon Back Plates • (12) #10 x 1-1/2" Pan Head • Phillips Drive • Self Drilling • Stainless Steel Screws • Brackets can be used for 30 to 40 degree angles.  
#VB-213 (2 Piece)



#VB-215

Multi-Angle "T-Rail" Bracket Kit



#VB-214

Multi-Angle 2" x 3-1/2" Bracket Kit



#VB-217

Horizontal Multi-Angle "T-Rail" Bracket Kit



#VB-216

Horizontal Multi-Angle 2" x 3-1/2" Bracket Kit

**\*IMPORTANT:** Installer must consult local code officials for compliance to building code requirements.



**Glue - Vinyl Adhesive**  
#VM-103 (White)  
#VM-103T (Tan)



**Screws**  
#10 x 1" Self Drilling w/cap  
Designed for use with PVC,  
Wood or Aluminum  
#VM-109 (White)  
#VM-109T (Tan)



**2 x 3-1/2" Rail Mount**  
(Not for use in railing applications. Does not meet code.)  
#VM-112

# Vinyl Railing Systems

We specialize in custom orders.  
No job too small.

## RAILING KIT CONTENTS

- Reinforced Aluminum Top Rail (T-Rail or 2" x 3-1/2")
- Bottom Rail 2" X 3-1/2"
- Decorative Balusters (4 styles)
- Foot Block (6' and over)
- 4 Rail Brackets (SS Screws Included)

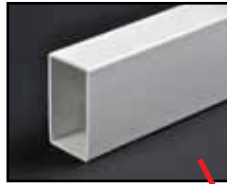
## OPTIONAL COMPONENTS

- Post Caps
- Posts
- Gate Kits
- Screws
- Post Skirt / Base Trim
- Colonial Newel Post
- Glue - Vinyl Adhesive
- Solar Post Caps
- Post Mounts
- Gate Hardware
- Post Wrap

## TCM RAILING KIT ADVANTAGES

- Heavy-duty top rails are reinforced with aluminum for added strength and safety
- Pre-packaged, easy to install railing kits
- Maintenance-free
- Easy installation
- Durable covered brackets provide strength and safety
- 4 baluster styles to choose from
- No painting, staining or splinters
- Limited lifetime warranty

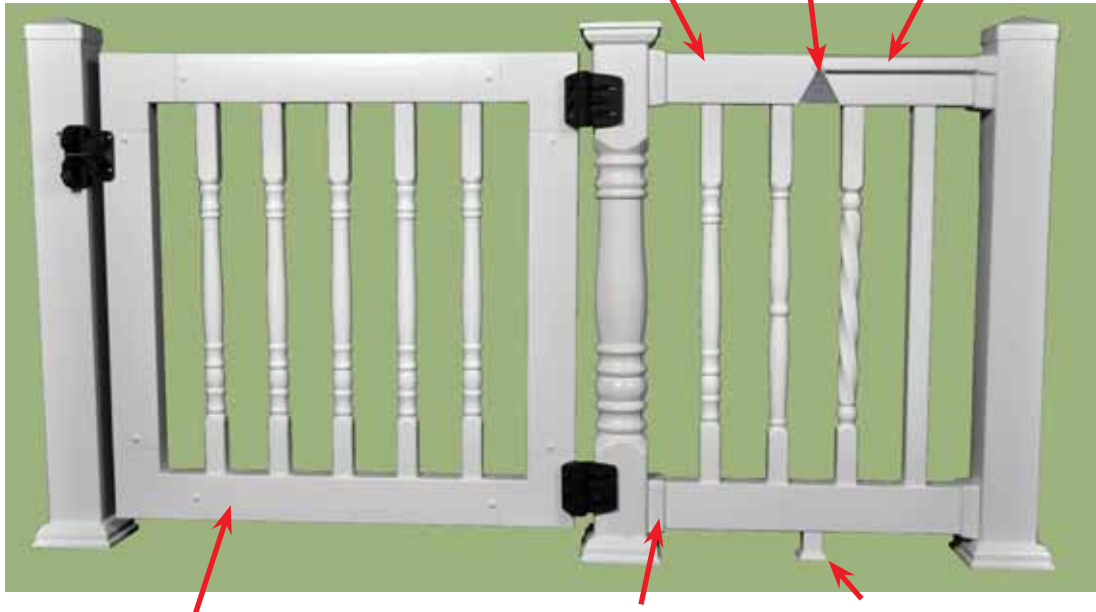
Standard Rail



Aluminum P Channel



T-Rail



## GATE KITS

- Complete gate kit in a box
- Black or white hinges & latch sold separately
- Custom size gates are available
- Can be installed to swing left or right
- Available in 36" or 42" rail heights
- 34" wide gate will fit a 36" wide opening and a 46" wide gate will fit a 48" wide opening

Hidden bracket fasteners provides a clean installation. (\*Meets AC-174 Code)



Foot Block included with 6' & 8' level sections. Designed to help prevent bottom rail from sagging over time.

**\*Covered  
brackets meet  
AC-174 Code**

\*IMPORTANT: Installer must consult local code officials for compliance to building code requirements.

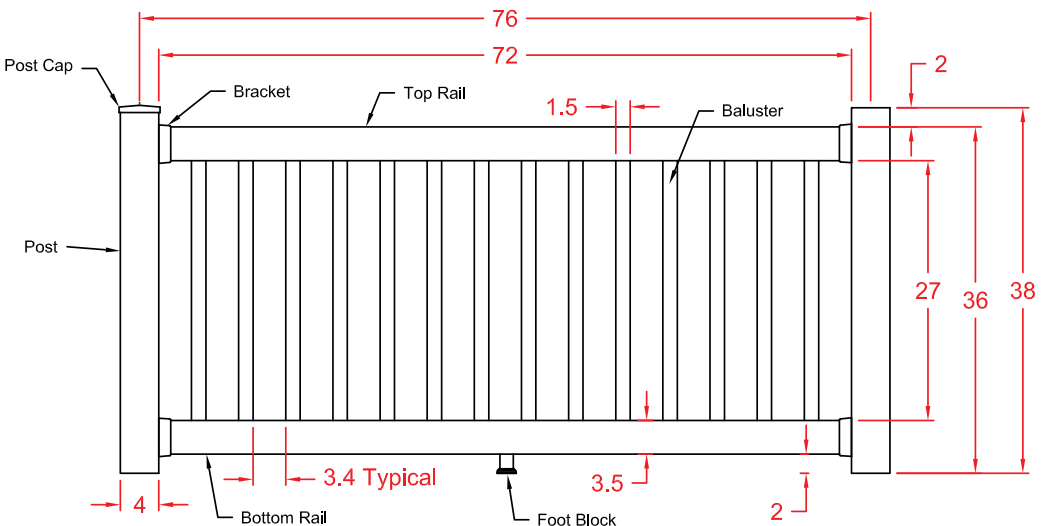
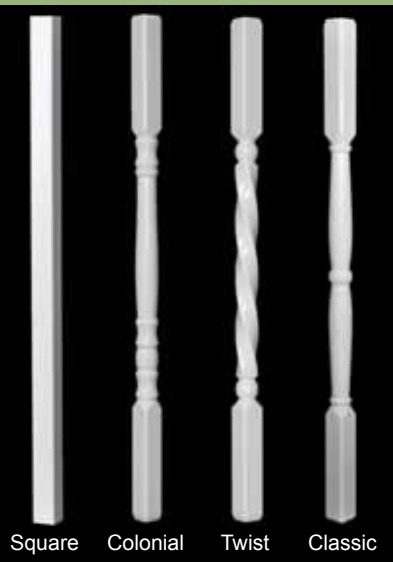


White

Tan  
(Almond)

	Colors	Reinforced Aluminum Top Rail	Length Level Kit	Length Stair Kit 29°-35°	Baluster Styles
36" High	White & Tan	Yes (Standard or T-Rail)	4', 6' & 8'	6' & 8'	Square, Colonial, Twist & Classic
42" High	White & Tan	Yes (Standard or T-Rail)	4', 6' & 8'	6' & 8'	Square & Colonial

Heavy-duty 1-1/2" Balusters



Shop drawing shown for 36" (H) x 72" (L) level railing kit - other drawings available upon request.



Benefits	Options
<ul style="list-style-type: none"> <li>• Superior Strength</li> <li>• Superior Quality</li> <li>• Fast Delivery</li> <li>• Unique Patented Designs</li> </ul>	<ul style="list-style-type: none"> <li>• Custom Colors</li> <li>• Custom Lengths</li> <li>• Private Label &amp; Designs</li> </ul>



- White
- Tan (Almond)
- Khaki (Adobe)





# Aggressive Pricing Rapid Ship Program



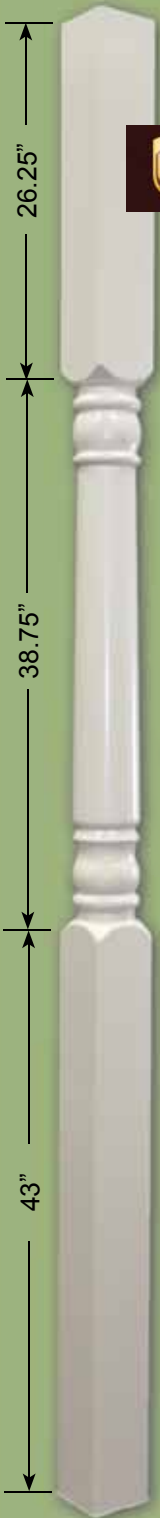
Patent Pending



## TaperEdge®

“Faster & Easier Installation”





 Can be shipped by UPS!



Porch Post Top & Bottom Brackets Included



Porch Post Load Bearing Pipe Included

Colonial Porch Post  
5" x 5" x 108"



- White
- Tan (Almond)

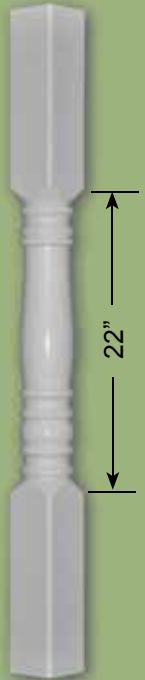
**Post Wrap**

#VPW4 (Will fit posts from 3-3/8" to 4-3/8")  
#VPW6 (Will fit posts from 5-1/4" to 6")  
Lengths: 40", 60", 120"

Use the Post Mount for installing Newel Posts



4" Post Sleeve  
Lengths: 38", 48",  
96" & 108"



Colonial Newel Post  
4" x 4" x 48"

UPS and the UPS brandmark are trademarks that are used with permission by the owner, United Parcel Service of America, Inc. All rights reserved.

## Professional-Grade Post Mount System

**\*Professional Grade meets AC-174 Code**

**Post Mount 36" or 42" high  
Wood or Concrete  
(4 x 4 Post Mount)**

Professional Grade Post Mount is designed for installing a post to concrete, wood and composite decking. Professional Grade is designed with an adjustable leveling feature to ensure accurate installation. They are made from Q235 steel with a Dachromate coating for superior rust prevention in even the most severe environments. The PVC guides are designed to function with all wall thickness of 4" post profiles.

**Professional Grade Post Mount**  
#PM-36-114 (36" High)  
#PM-42-115 (42" High)

Patent Pending



**Professional Grade  
Post Mount Mounting Hardware**  
Wood & Composite Applications  
#PM-HW-116



**Professional Grade  
Post Mount Mounting Hardware**  
Concrete Applications  
#PM-HC-117



*\*IMPORTANT: Installer must consult local code officials for compliance to building code requirements.*

## Economy-Grade Post Mount System



**Universal Corner / Line Tower**  
Used for anchoring post to concrete or wood decks.  
24" - 14 ga steel with a 1/4" base  
#PM-UCL24



**Line Tower**  
Used for anchoring line post to concrete or wood decks.  
24" - 14 ga steel with a 1/4" base  
#PM-L24



Screws



**Non-Self-closing Hinge**  
Stainless Steel - Powdercoat Finish

**Screws Included**  
#880756NB (Black)  
#880756NW (White)

**Adjustable Self-closing Hinge**  
**Heavy Size Spring Loaded**  
Stainless Steel - Powdercoat Finish

**Screws Included**  
#880797NB (Black)  
#880797NW (White)



**Vinyl PVC Notching Tool**  
#G889775 (9" Small)  
#G889776 (18" Large)



**Support Bracket**  
**PVC Support Donuts**  
**2 Set Screws**  
Pressed Steel - Zinc Coated  
#888966PS 4" X 1 7/8"  
#888968PS 5" X 1 7/8"



**Universal Latch**  
For 3" or Greater Post  
Stainless Steel - Powdercoat Finish

**Screws Included**  
#888598B (Black)  
#888598W (White)

**Cane Bolt Assembly**  
Pressed Steel - Powdercoat Finish

**Screws Included**  
#888757PS 3/4" X 36" Black  
#888762PSB 3/4" x 48" Black



## MULTI ADJUST HINGE



### Multi-Adjustable, Self-Closing Gate Hinge

- 3-way adjustment - vertical, horizontal & tension
- Gates up to 55 lbs
- Super-strong engineering polymer and stainless steel construction
- Horizontal adjustment bridges gate gaps up to 2"
- Vertical adjustment up to 3/4"

## KwikFit

General-purpose gate hinges



### Economical, General-Purpose Gate Hinge

- Economical gate hinge
- Gates up to 55 lbs
- Super-strong engineering polymer and stainless steel construction
- Won't rust, bind, sag or stain

## LOKK-LATCH Series 2



### Key-Lockable, General-Purpose Gate Latch

- High-tech, stylish appearance
- Adjust horizontally and vertically
- Won't rust or corrode
- Quick and easy to install



### LOKK Latch External Access Kit

The optional 'Push-Button' External Access Kit allows the main latch to be operated from outside the fence. (Note that locking the Push-Button does not lock the main latch inside the fence.)

## GATE-STOP



### Helps keep your gate straight and protects against gate-slam noise and damage

The Gate Stop is an ideal gate alignment device for preventing damage to gate parts and for prolonging gate life.

## MAGNA-LATCH

MAGNETIC SAFETY GATE LATCH



### Magnetic Safety Gate Latch for Pools and Child Safety Areas

- Magnetically triggered latching
- Key lockable safety
- Adjusts horizontally and vertically
- Patented 'Lost Motion' Technology
- Quick and easy to install

## LOKK-BOLT

Security Drop Bolt



### Lockable Security Drop Bolt

- 6-pin lockable, stainless steel privacy & security bolt
- Tough, molded polymer construction

## GATE-HANDLE



### A Simple and Stylish Gate Handle

A general-purpose device designed to fit all types of gates and materials, the Gate Handle offers convenient gate opening and closing. It can be used on virtually all commercial and household applications.



# TCM

**Tri Custom Manufacturing**

P.O. Box 6263

North Logan, UT 84341

Toll Free 1-866-833-9589

Phone 435-563-0261

Fax 435-563-3807

[www.tricm.com](http://www.tricm.com)

[info@tricm.com](mailto:info@tricm.com)



<b>CONTENTS</b>	<b>PAGE #</b>
12" River Rock Posts	2, 5
21" Ledge Stone Posts	3, 4
Post Caps & Post Skirts	6
Solar Lights	6
Railing Brackets	7
Railing Box Kits	8, 9
Balusters / Spindles	10, 11
Porch Posts / Newel Posts	12
Post Wraps	12
Post Mounts	13
Gate Hardware	14, 15



© 2014 Tri Custom Manufacturing

All Rights Reserved. Subject to change without notice.

**Tri Custom Manufacturing**

P.O. Box 6263

North Logan, UT 84341

Return Service Requested