

TCM

Tri Custom Manufacturing

- Balusters / Spindles
- Post Mount Towers
- Porch & Newel Posts
- Gate Hardware
- Caps / Post Skirts
- Faux Rock Pillars
- Railing Brackets
- Post Wraps



Quality Products for the Fence, Deck and Railing Industry™



Sold by the piece - full box quantities not required.



Flat Cap
#VC-F4 (4")
#VC-F5 (5")



New England Cap
#VC-NE4 (4")
#VC-NE5 (5")



2" x 3-1/2" External Rail Cap
#VC-110



Newport Cap
Fits externally • Extends 1.250" over the profile • Total height 6.125".
#VC-113 (4" white only)



Ball Cap
#VC-B4 (4")
#VC-B5 (5")



Gothic Cap
#VC-G4 (4")
#VC-G5 (5")



Decorative Knuckle
#VM-111 (4" only)



New England Post Skirt
#VC-SK4 (4")
#VC-SK5 (5")



Two Piece Post Skirt
#VC-SK2P4 (4")
#VC-SK2P5 (5")

Railing Foot Block

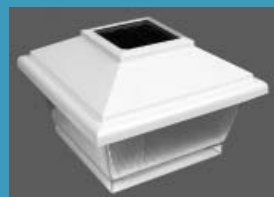
The adjustable Foot Block Kit is designed to support sagging rails. Two-piece unit comes pre-assembled & ready to mount. The internal ratchet feature allows the Foot Block to expand from 2.000" to 3.500" in 1/4" increments. The top portion is 1.145" x 1.145" to be screwed into the bottom of a 1-3/8" or wider horizontal rail. The skirt portion of the base measures 2.000" x 2.000". A screw can be installed into the side of the Foot Block for those demanding load applications.
#VM-108



Solar Lighting



Galaxy Solar Post Cap
Fits externally over 4" or 5" posts • Dual Ni-Cad rechargeable batteries • Four LED lights • Up to 12 hours of light • Includes adapter for use with 4" posts.
#VLS-101
White, Tan & Black



Galaxy Comet Solar Post Cap
Universal lens fits externally over 4" or 5" posts • NiCad rechargeable battery • 1 LED light.
#VLS-102



Galaxy Solar Wedge Accent Light
3" x 2-1/2" x 7" • Ultrabright 3 LED lights • 3 rechargeable Nicad batteries • Attaches to most surfaces • Includes screws and 6" double sided tape
VLS-107

***Covered brackets meet AC-174 Code**



2" x 3-1/2" Covered Bracket Kit
 Includes: (2) 2" x 3-1/2" Covers • (2) Nylon Back Plates • (12) #10 x 1-1/2" Pan Head • Phillips Drive • Self Drilling • Stainless Steel Screws.
 #VB-210 (2 Piece)



T-Rail Covered Bracket Kit
 Includes: (1) T-Rail Cover (1) 2" x 3-1/2" Cover • (2) Nylon Back Plates • (12) #10 x 1-1/2" Pan Head • Phillips Drive • Self Drilling • Stainless Steel Screws.
 #VB-211 (2 Piece)



2" x 3-1/2" Stair Covered Bracket Kit
 Includes: (1) Upper 2" x 3-1/2" Rail Cover • (1) Lower 2" x 3-1/2" Rail Cover • (2) Nylon Back Plates • (12) #10 x 1-1/2" Pan Head • Phillips Drive • Self Drilling • Stainless Steel Screws • Brackets can be used for 30 to 40 degree angles.
 #VB-212 (2 Piece)



T-Rail Stair Covered Bracket Kit
 Includes: (1) Upper T-Rail Cover • (1) Lower T-Rail Cover • (2) Nylon Back Plates • (12) #10 x 1-1/2" Pan Head • Phillips Drive • Self Drilling • Stainless Steel Screws • Brackets can be used for 30 to 40 degree angles.
 #VB-213 (2 Piece)



#VB-215

Multi-Angle "T-Rail" Bracket Kit



#VB-214

Multi-Angle 2" x 3-1/2" Bracket Kit



#VB-217

Horizontal Multi-Angle "T-Rail" Bracket Kit



#VB-216

Horizontal Multi-Angle 2" x 3-1/2" Bracket Kit

***IMPORTANT:** Installer must consult local code officials for compliance to building code requirements.



Glue - Vinyl Adhesive
 #VM-103 (White)
 #VM-103T (Tan)



Screws
 #10 x 1" Self Drilling w/cap
 Designed for use with PVC,
 Wood or Aluminum
 #VM-109 (White)
 #VM-109T (Tan)



2 x 3-1/2" Rail Mount
 (Not for use in railing applications. Does not meet code.)
 #VM-112

Vinyl Railing Systems

RAILING KIT CONTENTS

- Reinforced Aluminum Top Rail (T-Rail or 2" x 3-1/2")
- Bottom Rail 2" X 3-1/2"
- Decorative Balusters (4 styles)
- Foot Block (6' and over)
- 4 Rail Brackets (SS Screws Included)

OPTIONAL COMPONENTS

- Post Caps
- Posts
- Gate Kits
- Screws
- Post Skirt / Base Trim
- Colonial Newel Post
- Glue - Vinyl Adhesive
- Solar Post Caps
- Post Mounts
- Gate Hardware
- Post Wrap

We specialize in custom orders. No job too small.

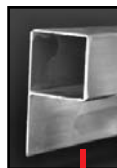
TCM RAILING KIT ADVANTAGES

- Heavy-duty top rails are reinforced with aluminum for added strength and safety
- Pre-packaged, easy to install railing kits
- Maintenance-free
- Easy installation
- Durable covered brackets provide strength and safety
- 4 baluster styles to choose from
- No painting, staining or splinters
- Limited lifetime warranty

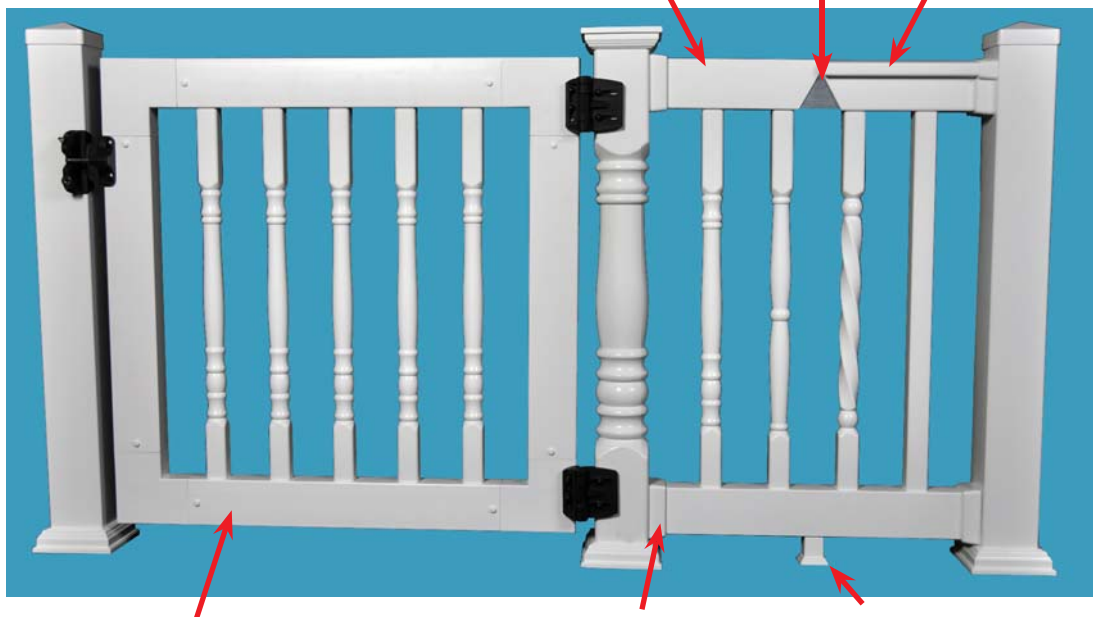
Standard Rail



Aluminum P Channel



T-Rail



GATE KITS

- Complete gate kit in a box
- Black or white hinges & latch sold separately
- Custom size gates are available
- Can be installed to swing left or right
- Available in 36" or 42" rail heights
- 34" wide gate will fit a 36" wide opening and a 46" wide gate will fit a 48" wide opening

Hidden bracket fasteners provides a clean installation. (*Meets AC-174 Code)



Foot Block included with 6' & 8' level sections. Designed to help prevent bottom rail from sagging over time.

***Covered brackets meet AC-174 Code**

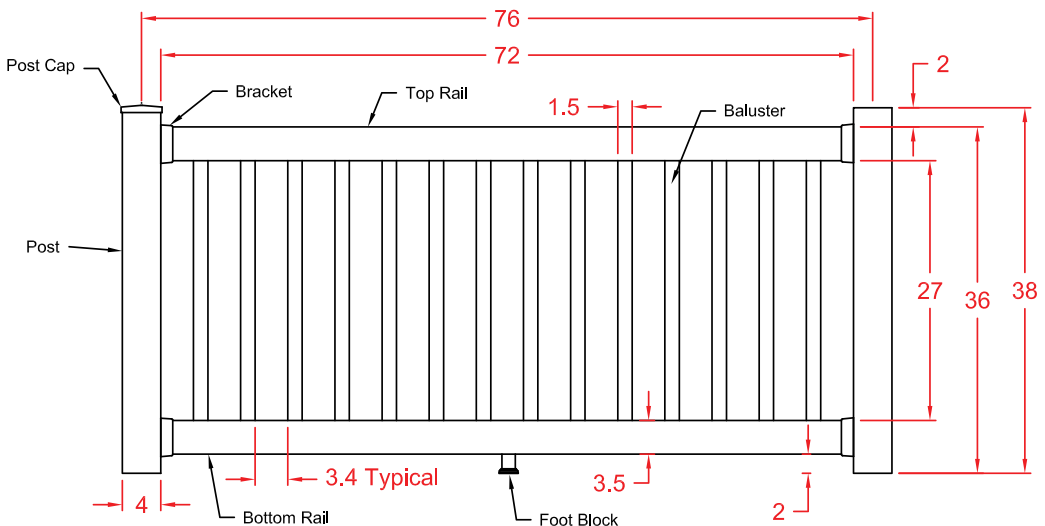
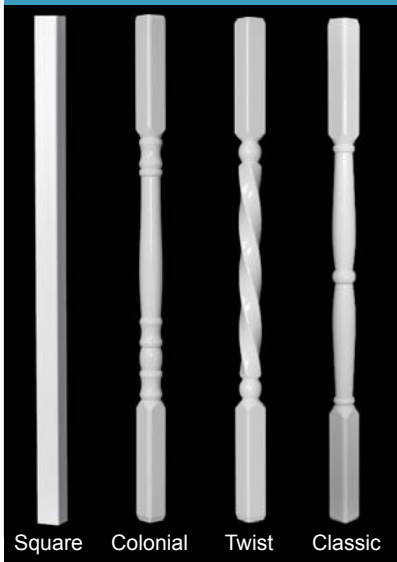
*IMPORTANT: Installer must consult local code officials for compliance to building code requirements.

White

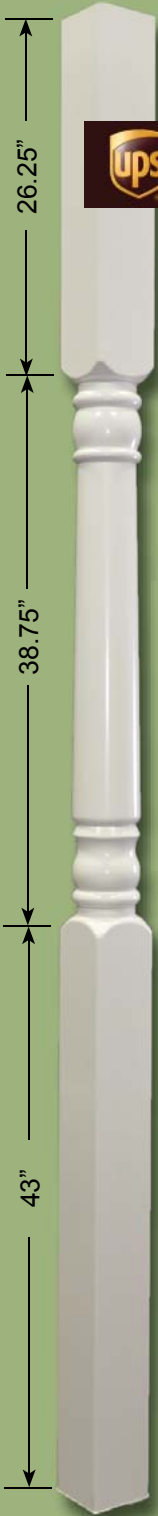
 Tan
(Almond)

	Colors	Reinforced Aluminum Top Rail	Length Level Kit	Length Stair Kit 29°-35°	Baluster Styles
36" High	White & Tan	Yes (Standard or T-Rail)	4', 6' & 8'	6' & 8'	Square, Colonial, Twist & Classic
42" High	White & Tan	Yes (Standard or T-Rail)	4', 6' & 8'	6' & 8'	Square & Colonial

Heavy-duty 1-1/2" Balusters



Shop drawing shown for 36" (H) x 72" (L) level railing kit - other drawings available upon request.



 Can be shipped by UPS!



Porch Post Top & Bottom Brackets Included



Colonial Porch Post
5" x 5" x 108"



- White
- Tan (Almond)

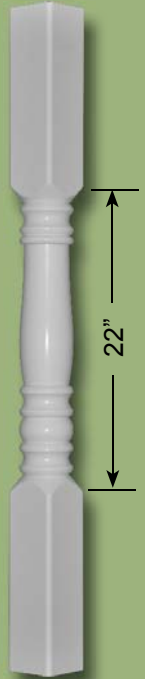
Post Wrap

#VPW4 (Will fit posts from 3-1/4" to 4-1/4")
#VPW6 (Will fit posts from 5" to 6-3/4")
Lengths: 40", 60", 120"

Use the Post Mount for installing Newel Posts



4" Post Sleeve
Lengths: 38", 48", 96" & 108"



Colonial Newel Post
4" x 4" x 48"

UPS and the UPS brandmark are trademarks that are used with permission by the owner, United Parcel Service of America, Inc. All rights reserved.

Professional-Grade Post Mount System

***Professional Grade meets AC-174 Code**

**Post Mount 36" or 42" high
Wood or Concrete
(4 x 4 Post Mount)**

Professional Grade Post Mount is designed for installing a post to concrete, wood and composite decking. Professional Grade is designed with an adjustable leveling feature to ensure accurate installation. They are made from Q235 steel with a Dachromate coating for superior rust prevention in even the most severe environments. The PVC guides are designed to function with all wall thickness of 4" post profiles.

Professional Grade Post Mount
#PM-36-114 (36" High)
#PM-42-115 (42" High)

Patent Pending



**Professional Grade
Post Mount Mounting Hardware**
Wood & Composite Applications
#PM-HW-116



**Professional Grade
Post Mount Mounting Hardware**
Concrete Applications
#PM-HC-117



**IMPORTANT:* Installer must consult local code officials for compliance to building code requirements.

Economy-Grade Post Mount System



Universal Corner / Line Tower
Used for anchoring post to concrete or wood decks.
24" - 14 ga steel with a 1/4" base
#PM-UCL24



Line Tower
Used for anchoring line post to concrete or wood decks.
24" - 14 ga steel with a 1/4" base
#PM-L24



Screws



Non-Self-closing Hinge
Stainless Steel - Powdercoat Finish

Screws Included
#880756NB (Black)
#880756NW (White)

Adjustable Self-closing Hinge
Heavy Size Spring Loaded
Stainless Steel - Powdercoat Finish

Screws Included
#880797NB (Black)
#880797NW (White)



Vinyl PVC Notching Tool
#G889775 (9" Small)
#G889776 (18" Large)



Support Bracket
PVC Support Donuts
2 Set Screws
Pressed Steel - Zinc Coated
#888966PS 4" X 1 7/8"
#888968PS 5" X 1 7/8"



Universal Latch
For 3" or Greater Post
Stainless Steel - Powdercoat Finish

Screws Included
#888598B (Black)
#888598W (White)

Cane Bolt Assembly
Pressed Steel - Powdercoat Finish

Screws Included
#888757PS 3/4" X 36" Black
#888762PSB 3/4" x 48" Black



MULTI-ADJUST HINGE



Multi-Adjustable, Self-Closing Gate Hinge

- 3-way adjustment - vertical, horizontal & tension
- Gates up to 55 lbs
- Super-strong engineering polymer and stainless steel construction
- Horizontal adjustment bridges gate gaps up to 2"
- Vertical adjustment up to 3/4"

KwikFit

General-purpose gate hinges



Economical, General-Purpose Gate Hinge

- Economical gate hinge
- Gates up to 55 lbs
- Super-strong engineering polymer and stainless steel construction
- Won't rust, bind, sag or stain

LOKK-LATCH Series 2



Key-Lockable, General-Purpose Gate Latch

- High-tech, stylish appearance
- Adjust horizontally and vertically
- Won't rust or corrode
- Quick and easy to install



LOKK Latch External Access Kit

The optional 'Push-Button' External Access Kit allows the main latch to be operated from outside the fence. (Note that locking the Push-Button does not lock the main latch inside the fence.)

GATE-STOP



Helps keep your gate straight and protects against gate-slam noise and damage

The Gate Stop is an ideal gate alignment device for preventing damage to gate parts and for prolonging gate life.

MAGNA-LATCH

MAGNETIC SAFETY GATE LATCH

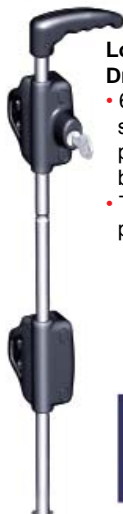


Magnetic Safety Gate Latch for Pools and Child Safety Areas

- Magnetically triggered latching
- Key lockable safety
- Adjusts horizontally and vertically
- Patented 'Lost Motion' Technology
- Quick and easy to install

LOKK-BOLT

Security Drop Bolt



Lockable Security Drop Bolt

- 6-pin lockable, stainless steel privacy & security bolt
- Tough, molded polymer construction

GATE-HANDLE



A Simple and Stylish Gate Handle

A general-purpose device designed to fit all types of gates and materials, the Gate Handle offers convenient gate opening and closing. It can be used on virtually all commercial and household applications.





Benefits	Options
<ul style="list-style-type: none"> • Superior Strength • Superior Quality • Fast Delivery • Unique Patented Designs 	<ul style="list-style-type: none"> • Custom Colors • Custom Lengths • Private Label & Designs



White

Tan
(Almond)

Khaki
(Adobe)



Shorty



Orleans Belly (Patent Pending)



Princeton



Twist Patent No. D512,165



Classic



Parkway 1 Ball



Parkway 2 Ball



Square



AGGRESSIVE PRICING
RAPID SHIP PROGRAM



Patent Pending

TaperEdge®

"Faster & Easier Installation"

Two Locations



Patents Pending

Pre-Formed Faux Rock Pillars

"If you can't tell the difference, what difference does it make!"™



12" x 12" x 64" Pillar

- River Rock
- Colors: Rustic Calico, Brown & Gray
- Perfect for Ranch Rail with increased profits
- Can be ordered with a mailbox



Pillar 12" x 12" x 64" High
(Subtract 5" for cap)



21" x 21" Stackable Pillar

- Ledge Stone
- Colors: Brown & Gray
- Stack as high as your internal structure will support



Main Pillar Section
21" x 21" x 56 1/2" High
(Subtract 10 1/2" for cap)



Stack Section
21" x 21" x 15 1/2" High

Patents Pending



Advantages

- No Mason Required
- Same Day Installation
- One Person Installation
- No Sub-contractors
- Impact Resistant / Durable
- Can be Shipped by UPS!
- Formed with Heavy Wall MDPE
- UV Fade Resistant
- Maintenance Free
- Affordable

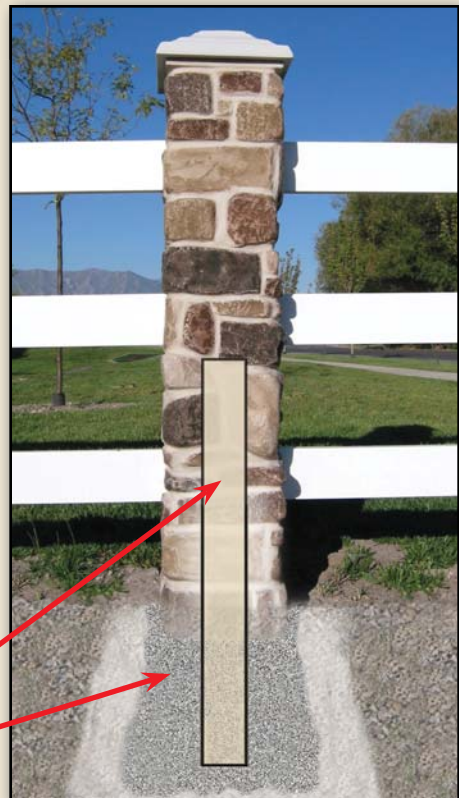


UPS and the UPS brandmark are trademarks that are used with permission by the owner, United Parcel Service of America, Inc. All rights reserved.

Pillar Riser
12" x 12" x 17 3/8"
(Same color as cap)

Installation

Each Pillar can be buried for shorter applications. The Pillar is slid over a pre-installed 4 x 4 or other existing post and secured into place by putting additional concrete or gravel inside the Pillar. The simulated concrete cap is removable and is designed to accept different lighting applications. Contact us for complete installation instructions.





Flower Box
Planter Available





Compatible with

- Ornamental Fence
- Vinyl Fence
- Horse Jump
- Vinyl Railing
- Ranch Rail
- Wood Fence
- Aluminum Fence
- Privacy Fence
- Horse Fence
- Mail Box Post
- Lamp Post
- Sign Pillar

TCM

Tri Custom Manufacturing

P.O. Box 6263

North Logan, UT 84341

Toll Free 1-866-833-9589

Phone 435-563-0261

Fax 435-563-3807

www.tricm.com

info@tricm.com



© 2010 Tri Custom Manufacturing

All Rights Reserved. Subject to change without notice.

Tri Custom Manufacturing

P.O. Box 6263

North Logan, UT 84341

Return Service Requested